

## 幕墙产品

铝单板系列 铝塑复合板系列

## Curtain wall products

Solid Aluminum Sheet Series

Aluminum Composite Panel



# 目录

## 幕墙产品



# Curtain wall products

# Contents

### 关于墙煌

生产基地  
荣誉资质  
专利成果

### 服务实力

创新研发  
生产设备  
原材标准  
质量品控

### 产品应用

#### 铝单板系列

- 液体喷涂铝单板
- 粉末喷涂铝单板
- 氟硅喷涂铝单板
- 水性陶瓷铝单板
- 光催化自洁铝单板
- 仿石纹撒点喷涂铝单板
- 热转印纹理铝单板
- 双曲面铝单板

#### 铝塑复合板系列

- 普通铝塑复合板
- 铜(钢)塑复合板
- 防火铝塑复合板
- 木、石纹铝塑复合板
- 变色龙铝塑复合板
- 纳米铝塑复合板

### 应用案例

#### 典型案例 工程列表

### 生产过程

### 加工流程

### 服务体系

服务网络  
全国办事处

### Alucosuper Profile

Production base  
Honor  
Patent results

### Service Strength

Innovative research and Development  
Production Equipment  
Standard for Raw Materials  
Quality Control

### Product Introduction

#### Solid Aluminum Sheet Series

- Liquid sprayed aluminum sheet
- Powder coated aluminum sheet
- Fluorine silicon sprayed aluminum sheet
- Water - based ceramic aluminum sheet
- Photocatalytic self - cleaning aluminum sheet
- Sprayed aluminum sheet
- Thermal transfer textured aluminum sheet
- Hyperboloid Aluminum Sheet

#### Aluminum composite Panel series

- Normal aluminum composite panel
- Copper (steel) composite panel
- Fireproof aluminum Composite panel
- Wood, Stone Pattern Aluminum Composite Panel
- Chameleon Aluminum Composite Panel
- Nano self-cleaning ACP

### Application Case

Case highlights  
List of projects

### Production Process

### Manufacturing Processes

### Service System

Service network  
National Office

# 跃升，给建筑最美的新生！

从行业的探索者，到标准的书写者

墙煌为建筑打造的不只是靓丽的外衣

更是让建筑价值持续成长的品牌形象

从技术的创新者，到思想的变革者

墙煌20年不断跨越，与行业一起成就最美的发展

在建筑工业化时代，我们开启绿色、集成的发展模式

以定制化的整体解决方案

为墙煌幕墙产品系列注入新生价值

努力超越客户的想象和期待

# Rising, to the most beautiful new life for building

From industry explorers to standard writers

ALUCOSUPER is not just for the beautiful coat to the building.

It is the value of the building continued to grow brand image

From the innovators of technology to the innovators of ideas

20 years, the continue crossing, with the achievements of the most beautiful development to the industry.

Today, in the era of industrial construction, we open the green, integrated development model

To customize the overall solution

For the ALUCOSUPER spray coating products into the new value

And strive to exceed customer's imagination and expectations





# 关于墙煌

《铝单板》、《铝塑板》国家行业标准起草单位之一  
第一届开始至今的副理事长单位  
国内首家通过国家CTC认证单位  
国内幕墙喷涂板最优秀的品牌之一  
全面采用国际最先进的喷涂涂装铝板技术

## 荣誉资质

中国建筑装饰铝塑板行业十强  
中国建筑装饰材料百强企业  
中国建筑材料联合会铝塑复合材料分会副理事长单位  
国家高新技术企业  
浙江省著名商标  
浙江省AAA级守合同重信用单位  
ISO9001:2008产品质量认证  
浙江名牌产品 (铝单板、铝塑复合板、彩涂铝板)  
铝塑板CE认证  
国家火炬计划项目证书 (抗脏自洁彩涂铝板)  
国家火炬计划项目证书 (变色龙彩色涂层铝板)  
国家火炬计划项目证书 (热反射彩色涂层铝板)

## 专利成果

发明专利10项  
实用新型专利30项  
科学技术成果45项

墙煌系精工控股集团旗下的直属产业，创建于1996年，经过20年的跨越发展，一举成为行业最具影响力的品牌之一。旗下拥有“浙江墙煌”和“安徽墙煌”两大生产基地，以中高端定位为主，专业生产各类规格齐全的彩涂铝板、彩涂钢板、铝单板、铝塑复合板和保温装饰一体板等产品系列，是集设计、研发、制造到销售于一体的大型企业，多项创新专利填补了国内的技术空白。墙煌，一直在为行业探索可持续发展的道路，积极构建了绿色集成化的产业模式，助推建筑工业化的发展，为客户打造更具价值的定制化整体产品解决方案。

### 墙煌新材料股份有限公司

位于浙江绍兴，总投资人民币4.0亿元，建筑面积4.5万平方米。

### 安徽墙煌彩铝科技有限公司

位于安徽六安，总投资人民币4.3亿元，占地总面积20万平方米。

## HONOR

China Building Decoration aluminum composite panel industry top ten  
China Building Decoration Materials hundred enterprises  
China Building Materials Federation of aluminum-plastic composite materials, vice president  
The national high-tech enterprises  
ISO9001: 2008 product quality certification  
Zhejiang brand-name products(solid aluminum sheet, aluminum composite panel,color coated aluminum coil)CE certification of aluminum composite panel  
CE certification of aluminum composite panel  
National Torch Program Project Certificate - Self - cleaning anti - dirty color coated aluminum  
National Torch Program Certificate - Chameleon colored coated aluminum sheet  
National Torch Program Project Certificate - Heat - reflective color - coated aluminum sheet

## PATENT RESULTS

Ten patents  
Thirty Practice patents  
Forty-five scientific and technological achievements

# Company Profile

-One drafter of National Standard for "Solid Aluminum Sheet", "Aluminum Composite Panel"  
-First standing director of aluminum building materials from the very beginning to now  
-First one to pass CTC of national testing certification center of building materials  
-The completed use of international advanced aluminum coating technology

Established in 1996, it has become one of the most influential brands in the industry during 20 years development, It has two production bases of "Zhejiang ALUCOSUPER" and "Anhui ALUCOSUPER ", which mainly produce high quality products, specializing in the production of various color coated aluminum coil, PPGI, solid aluminum panel,aluminum composite panel,cladding aluminum system, ALUCOSUPER, has been for the industry to explore the path of sustainable development, and actively build a green integrated industrial model, boost the construction of industrial development, to create more value for customers .

Wonderful-wall New Materials Corp., Ltd  
Located in Shaoxing, Zhejiang, a total investment of RMB¥400 million, Anhui Wonderful-wall color coating Aluminum Science Technology Co.,ltd, is Located in Anhui Province Lu'an City Economic and Technological Development Zone, a total investment of RMB¥430 million, covers an area of 200,000 square meters.

服务实力



Service strength

创新研发

公司构建了业内专业的研发体系，与国内著名学院构建了长期深度的战略研发关系，坚持以技术研发作为企业跨越发展的动力，拥有各类专家30名，以二十年的研发生产经验与人才团队的整体优势，自主研发多项核心工艺技术，极大丰富了公司的产品类型。墙煌纯熟的技术研发体系，完全可以满足不同领域客户对项目的差异性需求和高标准预期。

INNOVATION STRENGTH

Company build a professional industry research and development system, and domestic well-known college to build a long-term depth of strategic research and development relations, adhere to the technology research and development as a driving force for enterprise development, with 30 experts, The team's overall advantage, independent research and development of a number of core technology, greatly enriched the company's product type. ALUCOSUPER skilled technical research and development system, can fully meet the different areas of customer demand for projects and high standards of the expected difference.

Five platform support,  
build integrated solution strength

五大平台支持，  
打造整体化解决实力



2,000,000

年产铝单板200万平方米

1,200,000

年产铝塑板120万平方米

Annual capacity: 2,000,000 square meters of solid aluminum sheet  
Annual capacity: 1.2 million square meters of aluminum composite panel

生产设备

公司积极实施技改研发，以ISO9001质量体系为保障，在国内率先引进日本原装铝塑板复合流水线，粉末喷涂流水线和德国的深加工设备。拥有中高档涂装生产线及其配套服务的分切、剪板线、铝单板生产线与铝塑板生产线。

铝单板钣金生产线3条、喷涂生产线3条、全自动数控转塔冲床5台、数控雕刻机8台、数控折弯机11台、剪板机9台等。喷枪采用目前世界上最先进的日本兰氏高压静电喷枪，膜厚均匀，静电效果好；烘箱内采用日本正英燃料器，温控均匀，能最大限度的保证铝板的色差；优越的生产设备为生产高品质、高精度的产品提供有力保障。

原材标准

公司铝单板基材采用国内著名品牌西南铝或其他中铝集团下属企业生产的优质铝材，强度高，平整度好。

涂料采用美国PPG公司、日本立邦公司等知名品牌的氟碳涂料，其PVDF含量不低于70%；粉末涂料采用“老虎”牌涂料，涂层表面平整，色泽鲜艳，耐候性好。

STANDARD FOR RAW MATERIALS

Our aluminum materials used by well-known brands in Southwest Aluminum or other aluminum companies affiliated enterprises of high-quality aluminum, high strength, good flatness.

PVDF coating with the United States, Japan's Nippon, and other well-known brands of fluorocarbon paint, the PVDF content of more than 70 percent; powder coating with "Tiger" brand paint, coating surface smooth, bright color, good weather resistance.

配色方案

墙煌公司已有上千种涂料颜色，可以随时满足客户的需要，同时，上述涂料公司在墙煌调色中心设有专职的调色人员，可随时为客户提供新的颜色涂层样板。

PRODUCTION EQUIPMENT

Alucosuper actively implement the technical research and development, to ISO9001 quality system as protection,introduce Japan to original aluminum composite panel line, powder coating lines and Germany's deep-processing equipment, the most advanced Japan's Lanshi high-pressure electrostatic spray gun, high coating production line,its supporting services of the cut&shearing lines, solid aluminum sheet production line ,aluminum composite panel production line.

Three Solid Aluminum sheet &spraying production lines, Five automatic CNC punch machines, Eight CNC engraving machines, Eleven CNC bending machines, nine shears. Spray gun using the world's most advanced Japanese Lanshi high-voltage electrostatic spray gun,

质量品控

公司打造了专业的质量检测中心，建立了业内领先的检测体系，拥有专项产品实验室，引进国际先进的“光泽度测试、熔体流动测试、涂层耐熔剂测试”等设备，形成一套高效完整、灵敏准确的高科技检测体系，以同步国际的标准在全球各地建立多个质量检测点，为产品的真正应用起到关键作用，获得良好的信誉与口碑。

QUALITY CONTROL

The company built a professional quality inspection center, with the industry's leading detection system, special product laboratories, the introduction of international advanced "Gloss test, melt flow test, solvent resistance test and other equipment to form a highly efficient Complete, sensitive and accurate high-tech detection system to synchronize international standards around the world, establish a number of quality inspection points for the real application of products play an important role in access to good reputation and reputation.

COLOR MATCHING

ALUCOSUPER has thousands of paint colors, can meet customer needs, at the same time, the paint company in the ALUCOSUPER color center with full-time staff, match new color coating model for customers .





2大幕墙产品  
14大产品体系

我们的产品有幸应用在北京鸟巢、上海环球中心、上海世博馆等众多实力项目中，一起参与和见证这个时代的盛典。同时走向国际，将我们的创新产品涂装在俄罗斯、迪拜、南非、美洲、欧洲、马来西亚、泰国的地标建筑上，让世界为之赞誉。

Two large spray series,  
Fourteen large product system

Our products have applied in the Beijing Bird's Nest, Shanghai World Center, the Shanghai World Expo and many other strength projects, to participate in and witness the celebration of this era. At the same time to the international, our innovative products painted in Russia, Dubai, South Africa, the USA, Europe, Malaysia, Thailand landmark building.

1-  
铝单板系列

铝单板以优质铝板为基材，PPG、VALSPAR的氟碳、聚酯涂料为原料；采用自动数控钣金加工设备；使用“兰氏”自动静电液体喷涂装置和“诺信”粉末静电喷涂装置，整个流程科学严谨，品质优良。

- 液体喷涂铝单板
- 粉末喷涂铝单板
- 氟硅喷涂铝单板
- 水性陶瓷铝单板
- 光催化自洁铝单板
- 仿石纹撒点喷涂铝单板
- 热转印纹理铝单板
- 双曲面铝单板



应用领域

墙煌产品广泛应用于护墙板、帷幕墙、屋顶等外墙装饰，也可用于室内的天花板、电梯、公路隧道壁板等，是新型的高档环保幕墙装饰材料。

基板尺寸:厚度2.0mm, 2.5mm, 3.0mm,4.0mm,5.0mm, 6.0mm 宽度1000mm-1900mm 长度≤6000mm
涂料种类:液体氟碳、液体聚酯、粉末聚酯、氟硅涂料、水性陶瓷涂料
成品常规尺寸:可加工成型长度≤6000mm, 宽度≤1500mm, 高度≤1900mm
特殊版型尺寸:常规圆弧板成型半径≥150mm, 特殊可开模 冲孔板孔形、大小、间距可按客户要求定制



Applications

Solid aluminum sheet series

Solid aluminum sheet use high-quality aluminum sheet as the substrate, PPG, VALSPAR fluorocarbon, polyester coating as raw materials; automatic CNC sheet metal processing equipment; use of "Lanshi" automatic electrostatic liquid spray device and "Nordson" powder electrostatic spraying device , The entire process of scientific rigor, high quality.

APPLICATIONS

It can be applied to wall decoration, curtain wall, roof and other exterior decoration, also can be used for indoor ceiling, elevator, road tunnel wall panels, etc., is a new environmental curtain wall decoration materials.

Aluminum dimensions: thickness 2.0 mm, 2.5 mm, 3.0 mm, 4.0 mm, 5.0 mm, 6.0 mm Width 1000mm-1900mm length ≤ 6000mm

Paint type: liquid fluorocarbon, liquid polyester, powder polyester, fluorosilicone coating, water-based ceramic coating

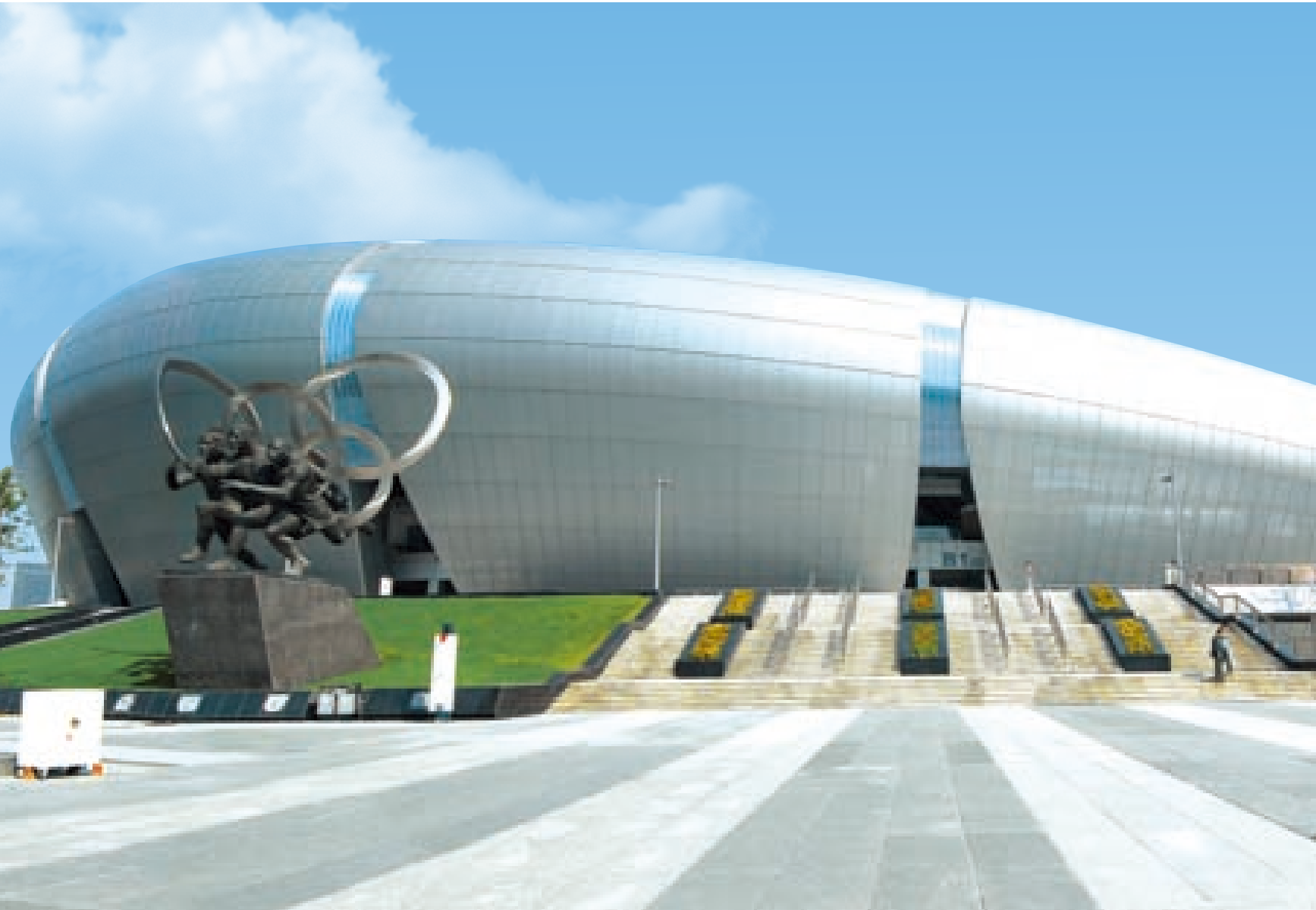
Finished products size: Machinable molding length ≤ 6000mm, width ≤ 1500mm, height ≤ 1900mm.

Special Size: Conventional circular plate forming radius ≥ 150mm Special can make mode.

Punching hole punching hole shape, size, spacing can be customized according to customer requirements.

## 液体喷涂铝单板

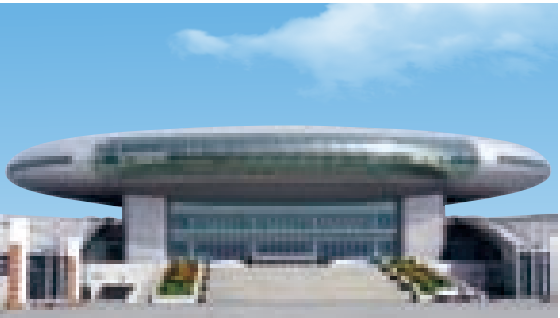
液体喷涂铝单板是以铝或铝合金(带)为基材,经加工成型且装饰表面具有保护性和装饰性涂层的建筑装饰用铝单板。采用国际知名品牌美国PPG公司、日本立邦公司的氟碳涂料,其PVDF含量不低于70%,确保色泽与耐久性的优异品质。我司生产的氟碳液体喷涂铝单板经国家建筑材料质量监督检验中心检测,产品性能完全符合《建筑装饰用铝单板》的国家标准要求。



常州奥体中心    Changzhou Olympic Sports Center

检查项目 TEST ITEM		标准要求 REQUIREMENTS OF STANDARD		结果 RESULT
膜厚 Film thickness		平均膜厚average≥40μm 最小局部膜厚min. ≥34μm		平均膜厚average 45μm 最小局部膜厚min.38μm
铅笔硬度 Dry-film hardness		≥1H		2H
光泽度 Gloss value		光泽度<30 Gloss Value<30	偏差Tolerance±5	光泽度范围gloss value26.9-31.2 平均值average28.6
		30≤光泽度<70 30≤Gloss<70	偏差Tolerance±7	
		光泽度≥70 Gloss≥70	偏差Tolerance±10	
耐冲击性 Resistance to impact		正反面铝材应无裂纹涂层应无脱落和开裂 Both the aluminum should be no crack. Coating without loss and craze		正反面铝材无裂纹涂层无脱落和开裂 Both the aluminum no crack. Coating without loss and craze
附着力 Film adhesion	干式 Drying adhesion	划格法0级 Class0		划格法0级 Class0
	湿式 Wet adhesion	划格法0级 Class0		划格法0级 Class0
	沸水 Boiling water adhesion	划格法0级 Class0		划格法0级 Class0
耐盐酸 Hydrochloric acid resistance		无变化 No change		无变化 No change
耐硝酸 Nitric acid resistance		无起泡等变化No changes such as blistering etc.△E≤5.0		无起泡等变化No changes such as blistering etc.△E≤5.0
耐砂浆性 Mortar resistance		无变化 No change		无变化 No change
耐溶剂性 Solvent resistance		无漏底 No base exposed		无漏底 No base exposed
耐盐雾性(4000h) Salt spray resisitance		不次于1级 No lower than grader 1		1级 Grade 1
耐湿热性(4000h) Humidity resistance		不次于1级 No lower than grader 1		1级 Grade 1
耐人工候加速老化(4000h) artificial weathering	色差 Colour retention	△E≤3.0		0.6
	光泽保持率 Gloss retention	≥70%		89%
	其他老化性能 Others	不次于0级 No lower than grader 1		0级 Grade 0

Liquid-sprayed solid aluminum sheet is used aluminum or aluminum alloy as the raw material, the processing of molding and decorative surface protective and decorative coating of architectural aluminum cladding. The use of internationally renowned brands of the United States PPG, Japan's state legislature fluorocarbon coating company, the PVDF content of not less than 70 percent, to ensure that the color and durability of excellent quality. Our production of fluorocarbon liquid sprayed aluminum sheet by the nation Building Materials Quality Supervision and Inspection Center testing, product performance in full compliance with "building decorative aluminum sheet," the national standards.



新疆国际会展中心  
Xinjiang International Convention and Exhibition Center

### 优势特点

- 重量轻, 刚性好, 强度高。
- 阻燃效果好, 防火性能佳。
- 较好的耐候性能和抗紫外线性能, 优异的耐酸耐碱性能; 在室外正常条件下, 20年褪色不明显。
- 铝板可进行焊接及拉延处理, 加工性能好, 可加工成平面、弧形面、球形面、塔形等复杂形状。
- 由于表面有一层保护性涂层, 故不易沾污, 便于清洁, 保养。
- 色彩可选性广, 美观大方、装饰效果极佳。
- 回收价值高, 无污染, 利于环保。
- 由于铝单板的形状及喷涂都已在工厂完毕, 故现场安装施工快捷便利。

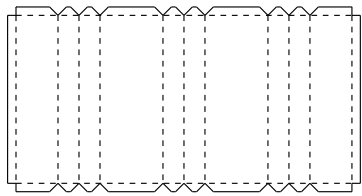
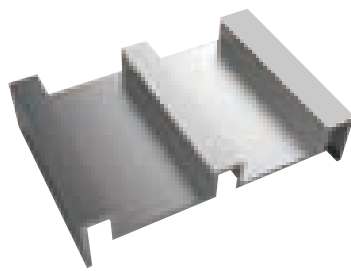
### Advantage and characteristics

- (1) light weight, good rigidity, high strength;
- (2) fire-retardant effect, good fire performance;
- (3) good weather resistance and UV resistance, excellent acid and alkali resistance; in the normal outdoor conditions, 20 years fade is not obvious;
- (4) aluminum can be welded and drawing processing, processing performance, and can be processed into a flat, curved surface, spherical surface, tower and other complex shapes;
- (5) as a protective coating on the surface, it is not easy to stain, easy cleaning and maintenance;
- (6) color widely, nice, excellent decoration;
- (7) recovery of high value, non-polluting, environmentally;
- (8) As the shape of aluminum sheet and spraying have been completed in the factory, on-site installation of fast and convenient installation.

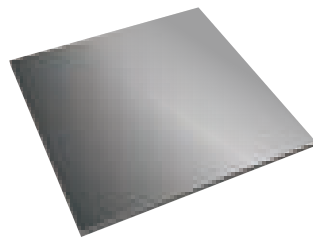
板型效果

常规板型  
Conventional plate type

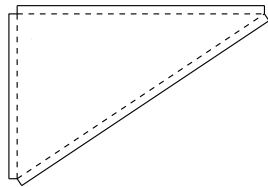
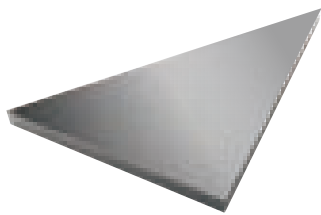
弓形板  
Bow plate



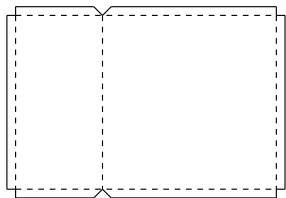
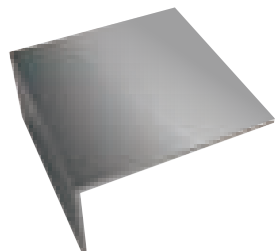
平板  
Flat



三角形板  
Triangular plate

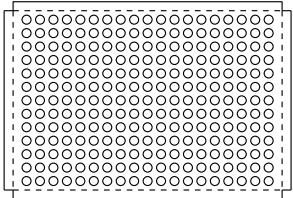
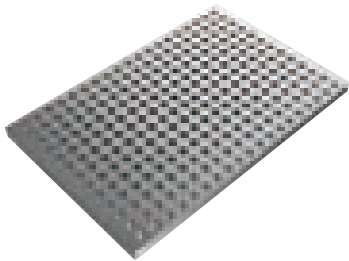


L型板  
L-shaped plate

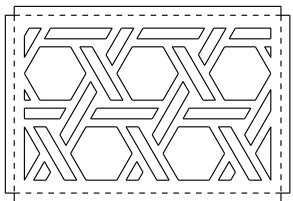
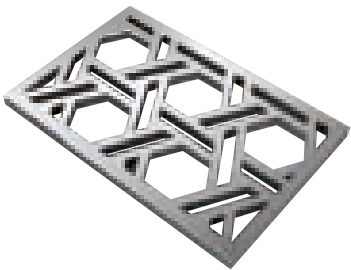


特殊板型  
Special type plate

冲孔板  
Perforated plates



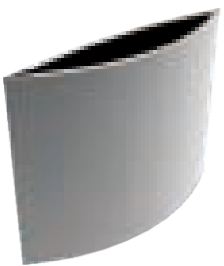
雕花板  
Carved Panels



圆弧板  
Circular plate



双曲面圆弧板  
Double arc





## 粉末喷涂铝单板

粉末喷涂铝单板是以铝或铝合金(带)为基材,经加工成型且装饰面是通过粉末涂料喷涂固化而成、具有保护性和装饰性涂层的建筑装饰用铝单板。



杭州·万象城 Hangzhou·Vientiane City

Powder coated  
aluminum sheet

平整耐候 靓丽持久  
Weathering send durable

检查项目 TEST ITEM		标准要求 REQUIREMENTS OF STANDARD		结果 RESULT
膜厚 Film thickness		最小局部膜厚min. ≥40μm		最小局部膜厚min.47μm
铅笔硬度 Dry-film hardness		≥1H		2H
光泽度 Gloss value		光泽度<30 Gloss Value<30	偏差Tolerance±5	光泽度范围 Gloss value17.7-18.6 平均值average18.3
		30≤光泽度<70 30≤Gloss<70	偏差Tolerance±7	
		光泽度≥70 Gloss≥70	偏差Tolerance±10	
耐冲击性 Resistance to impact		正反面铝材应无裂纹涂层应无脱落和开裂 Both the aluminum should be no crack. Coating without loss and craze		正反面铝材无裂纹涂层无脱落和开裂 Both the aluminum no crack. Coating without loss and craze
附着力 Film adhesion	干式 Drying adhesion	划格法0级 Class0		划格法0级 Class0
	湿式 Wet adhesion	划格法0级 Class0		划格法0级 Class0
	沸水 Boiling water adhesion	划格法0级 Class0		划格法0级 Class0
耐盐酸 Hydrochloric acid resistance		无变化 No change		无变化 No change
耐硝酸 Nitric acid resistance		无起泡等变化No changes such as blistering etc.△E≤5.0		无起泡等变化No changes such as blistering etc.△E=1.2
耐砂浆性 Mortar resistance		无变化 No change		无变化 No change
耐溶剂性 Solvent resistance		无漏底 No base exposed		无漏底 No base exposed



上海香港新世界花园 Shanghai New World Garden

Powder coated aluminum sheet is made of aluminum or aluminum alloy for the substrate, the processing of molding and the decorative surface is formed by powder coating spray curing, with protective and decorative coating of aluminum sheet building decoration.

### 优势特点

- 在 保证预处理和烘烤温度的情况下,可以采用无需底喷的工艺。
- 涂层薄,色差较易控制,大大降低生产成本。
- 涂层无流挂现象,平整度好,表观质量大为提高。
- 可以在常规涂装线上高温烘烤涂装。
- 粉末利用率高,不小于95%。
- 涂料及施工过程中无溶剂挥发,减少对操作人员及环境的伤害。

### Advantage and characteristics

- (1) the pre-treatment and baking temperature to ensure that the circumstances can be used without bottom-spraying process;
- (2) coating is easy to control, greatly reducing production costs;
- (3) coating with good flatness, apparent quality greatly improved;
- (4) coating line baking temperature coating;
- (5) high utilization of powder, not less than 95%;
- (6) paint and construction process solvent-free evaporation, reduce the operator and the environment.

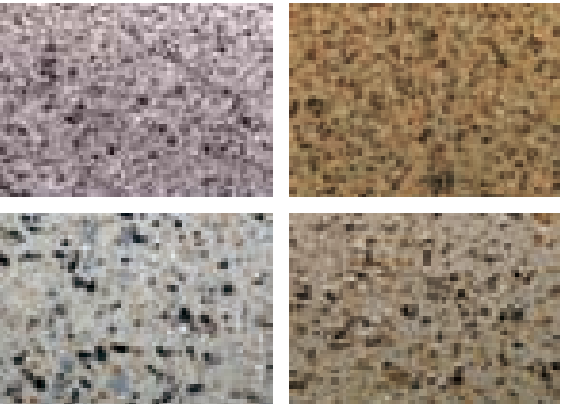
## 氟硅喷涂铝单板

氟硅喷涂铝单板是将真实的石材纹路反影到铝单板上，使铝单板达到逼真石材的装饰效果。本产品所用的涂料包括底漆、撒点面漆、罩光清漆均为水性氟硅高耐候涂料体系，是石材幕墙理想替代品。



检查项目 TEST ITEM		标准要求 REQUIREMENTS OF STANDARD		结果 RESULT
膜厚 Film thickness		平均膜厚average≥40μm 最小局部膜厚min. ≥34μm		平均膜厚average 45μm 最小局部膜厚min.38μm
铅笔硬度 Dry-film hardness		≥1H		2H
光泽度 Gloss value		光泽度<30 Gloss Value<30	偏差Tolerance±5	光泽度范围gloss value26.9-31.2 平均值average28.6
		30≤光泽度<70 30≤Gloss<70	偏差Tolerance±7	
		光泽度≥70 Gloss≥70	偏差Tolerance±10	
耐冲击性 Resistance to impact		正反面铝材应无裂纹涂层应无脱落和开裂 Both the aluminum should be no crack. Coating without loss and craze		正反面铝材无裂纹涂层无脱落和开裂 Both the aluminum no crack. Coating without loss and craze
附着力 Film adhesion	干式 Drying adhesion	划格法0级 Class0		划格法0级 Class0
	湿式 Wet adhesion	划格法0级 Class0		划格法0级 Class0
	沸水 Boiling water adhesion	划格法0级 Class0		划格法0级 Class0
耐盐酸 Hydrochloric acid resistance		无变化 No change		无变化 No change
耐硝酸 Nitric acid resistance		无起泡等变化No changes such as blistering etc.△E≤5.0		无起泡等变化No changes such as blistering etc.△E≤5.0
耐砂浆性 Mortar resistance		无变化 No change		无变化 No change
耐溶剂性 Solvent resistance		无漏底 No base exposed		无漏底 No base exposed
耐盐雾性(4000h) Salt spray resitance		不次于1级 No lower than grader 1		1级 Grade 1
耐湿热性(4000h) Humidity resistance		不次于1级 No lower than grader 1		1级 Grade 1
耐人工候加速老化 (4000h) artificial weathering	色差 Colour retention	△E≤3.0		0.6
	光泽保持率 Gloss retention	≥70%		89%
	其他老化性能 Others	不次于0级 No lower than grader 0		0级 Grade 0

Fluorine silicon sprayed solid aluminum sheet is the real stone grain reflection onto the aluminum sheet, solid aluminum sheet to achieve realistic decorative effect of stone. The products used in the paint, including primer, Caesar top paint, varnish are water-based high fluorine fluorine-resistant coating system.



### 优势特点

- 本产品具有氟碳喷涂铝单板所具有的一切理化性能和优势。
- 拥有逼真的石纹效果，凹凸效果。丰富了幕墙设计师对石纹图案的个性化选择。
- 涂膜是硅氧烷键交联，具有高涂膜附着性能和高耐候性能。
- 本产品以水为溶剂，减少了对操作工人身体健康的伤害。
- 涂料的使用只需要较低的烘干温度就可以固化，能耗较低。
- 本产品具有质量轻，防火，易安装的特点，铝板可回收利用。

### Advantage and characteristics

- (1) Fluorocarbon coating aluminum sheet has all the physical and chemical properties and advantages.
- (2)Realistic stone pattern effect, bump effect, enriches the individual selection of the stone pattern by the curtain wall designer.
- (3)Siloxane bond cross-linked, with high adhesion and high weathering properties.
- (4) This product with water as a solvent, reducing the operation of the health of workers harm.
- (5) Paint only need a lower drying temperature can be cured, lower energy consumption.
- (6) Light weight, fire, easy to install features, aluminum recyclable.

水性陶瓷铝单板

水性陶瓷喷涂铝单板是铝材经加工成型后，经过脱脂清洗除污，再化学处理成致密氧化膜，最后喷涂上一层水性陶瓷环保涂料，流平烘烤而成的建筑装饰用彩色喷涂铝单板。其各项性能指标均通过国家建筑工程材料质量监督检验中心的检测。



杭州地铁 Hangzhou metro

Water - based ceramic aluminum sheet

Water-based ceramic sprayed aluminum sheet is aluminum after processing, after degreasing cleaning decontamination, and then chemical treatment into dense oxide film, and finally sprayed with a layer of water-based ceramic green paint, leveling baking made of architectural decoration with color spray Aluminum sheet. Its performance indicators are through the National Construction Engineering Materials Quality Supervision, Inspection and Testing Center.



无害便捷 光泽强韧

Harmless and convenient glossy and tough

水性喷涂铝单板与搪瓷钢板比较  
Comparison of Water Sprayed Solid Aluminum Sheet and Ceramic Steel

类别 Category	水性喷涂铝单板 Comparison of Water Sprayed Solid Aluminum Sheet	搪瓷钢板 Ceramic Steel
颜色 Colour	色彩丰富、高装饰效果 Colorful	颜色受限 Color limited
涂装方式 Coating method	空气、静电喷涂 Air, electrostatic spraying	高温烧结 High temperature sintering
烘烤温度 Baking temperature	250~260℃	800~1000 ℃
生产成本 Cost of production	高 High	特别高 Especially high
耐腐蚀性 Corrosive resistance	与建筑物同寿命 The same life with the building	难修复，易生锈 Difficult to repair, easy to rust
销售价格 Sales price	300~500元(RMB)/m <sup>2</sup>	1000元(RMB)/m <sup>2</sup> 左右

水性涂料与溶剂型氟碳喷涂铝单板涂层性能比较  
Comparison of Waterborne paint and Solvent-borne paint  
Fluorocarbon Sprayed Solid Aluminum Sheet Coatings

类别 Category	水性陶瓷涂料 Waterborne paint	溶剂型氟碳涂料 Solvent-borne Fluorocarbon paint
状态 Condition	水溶型 Water soluble type	溶剂型 Solvent type
VOC%	<200/ L	≥500/ L
干燥 Dry °C/min	200~220/20~30	220~280/20~30
排放 Emission	无受限物品 Unlimited items	含受限物品 Limited items
光泽60G Gloss Degree 60G	高光80°左右 Highlights	高光80°左右 Highlights
硬度 Hardness	5H	H
耐燃烧性 Flammability resistance	A1	B
产烟毒性危险分级 Hazardous Classification of Tobacco Production	AQ1	ZA

优势特点

- 该项目产品具有更广的光泽度范围5~95，表面平整度更好。
- 该产品具有更高的涂层铅笔硬度、可达5H以上（无划痕），具有优异的抗划伤、耐摩擦性能。
- 具有A级防火性能，在高温下不产生有毒烟气。
- 具有耐高温、耐酸碱腐蚀、高耐候和自清洁功能。
- 具有可修复性的新型材料，特别适用于轨道交通体系中。

Advantage and characteristics

- (1) The product has a wider range of gloss 5 to 95, the surface smooth better.
- (2) The product has a higher coating pencil hardness, up to 5H or more (no scratches), with excellent scratch resistance, abrasion resistance.
- (3) A-class fire performance, high temperature does not produce toxic fumes.
- (4) High temperature, acid corrosion, high weathering and self-cleaning function.
- (5) Repairable new material, specially is suitable in the rail transit system.



## 光催化自洁铝单板

光催化自洁氟碳喷涂铝单板是在氟碳喷涂铝单板涂层表面常温下喷涂一层光催化自洁剂，附着在喷涂铝单板氟碳涂层表面，并在光催化作用下具有自洁、抗老化、降解有机物等环保功能的无机透明膜，属于氟碳喷涂铝单板经后处理而制得的升级产品。



## Photocatalytic self - cleaning aluminum sheet

防污防霾 氟碳升级  
Antifouling Haze, Fluorocarbon upgrade

Photocatalytic self-cleaning fluorocarbon coating aluminum sheet is sprayed on the surface of fluorocarbon-coated aluminum sheet at room temperature with a layer of photocatalytic self-cleaning agent attached to the surface of sprayed aluminum sheet fluorocarbon coating and photocatalytic with the self-cleaning, antidyrt, degradation of organic matter and other environmental features of the inorganic transparent film.



涂覆前 Prior to coating



涂覆一年后 One year after coating



### 优势特点

- 具有无毒副作用、耐磨性高、附着力强、耐酸雨侵蚀、耐紫外辐照等特点。
- 基本无色，涂装后不改变墙体的本来颜色。
- 涂覆工艺方便。可适用于辊涂后雾状喷淋以及喷涂板烘烤后常温表面喷涂，操作简单，易于实现。

### Advantage and characteristics

- (1) Non-toxic effects, high wear resistance, strong adhesion, acid rain erosion, resistance to ultraviolet radiation and so on.
- (2) not change the original color of the wall after painting .
- (3) Convenient coating process, applied to the mist spray and the sprayed surface of the sprayed plate after baking. The operation is simple and easy to realize.

## 仿石纹撒点喷涂铝单板

本产品是在常规氟碳喷涂铝单板的基础上进行的工艺改进和品种升级。主要目的是在保留氟碳耐候性、耐化学品腐蚀等优点的基础上进行仿石纹效果的制作，利用铝单板设计独特、施工便利、铝板可回收等优势，以替代干挂石材的装饰效果。



杭州·半岛国际 Hangzhou Peninsula International

## Sprayed aluminum sheet

装饰性强 安装便捷  
Decorative and easy installation

检查项目 TEST ITEM		标准要求 REQUIREMENTS OF STANDARD		结果 RESULT
膜厚 Film thickness		平均膜厚average≥40μm 最小局部膜厚min. ≥34μm		平均膜厚average 45μm 最小局部膜厚min.38μm
铅笔硬度 Dry-film hardness		≥1H		2H
光泽度 Gloss value		光泽度<30 Gloss Value<30	偏差Tolerance±5	光泽度范围gloss value26.9-31.2 平均值average28.6
		30≤光泽度<70 30≤Gloss<70	偏差Tolerance ±7	
		光泽度≥70 Gloss≥70	偏差Tolerance ±10	
耐冲击性 Resistance to impact		正反面铝材应无裂纹涂层应无脱落和开裂 Both the aluminum should be no crack. Coating without loss and craze		正反面铝材无裂纹涂层无脱落和开裂 Both the aluminum no crack. Coating without loss and craze
附着力 Film adhesion	干式 Drying adhesion	划格法0级 Class0		划格法0级 Class0
	湿式 Wet adhesion	划格法0级 Class0		划格法0级 Class0
	沸水 Boiling water adhesion	划格法0级 Class0		划格法0级 Class0
耐盐酸 Hydrochloric acid resistance		无变化 No change		无变化 No change
耐硝酸 Nitric acid resistance		无起泡等变化No changes such as blistering etc.△E≤5.0		无起泡等变化No changes such as blistering etc.△E≤5.0
耐砂浆性 Mortar resistance		无变化 No change		无变化 No change
耐溶剂性 Solvent resistance		无漏底 No base exposed		无漏底 No base exposed
耐盐雾性(4000h) Salt spray resisitance		不次于1级 No lower than grader 1		1级 Grade 1
耐湿热性(4000h) Humidity resistance		不次于1级 No lower than grader 1		1级 Grade 1
耐人工候加速老化(4000h) artificial weathering	色差 Colour retention	△E≤3.0		0.6
	光泽保持率 Gloss retention	≥70%		89%
	其他老化性能 Others	不次于0级 No lower than grader 1		0级 Grade 0

This product is in the conventional fluorocarbon coating aluminum sheet on the basis of process improvement and variety upgrades. The purpose is to retain the fluorocarbon weathering resistance, chemical corrosion and other advantages on the basis of the effect of imitation stone pattern production, the use of aluminum sheet can be profiled, construction convenience, aluminum can be recycled and other advantages to replace the hanging stone decorative effect.

### 优势特点

- 仿石纹喷涂铝单板具有石材的装饰风格，效果逼真。
- 具有更多的天然装饰效果选择，进一步丰富了铝单板的样式，丰富设计师想象、选择的空
- 仿石纹喷涂铝单板施工更轻便容易上墙，回收率高，环保，成本较低，可根据不同建筑外观要求加工成各种形状，而且可大面积成型。
- 仿石纹喷涂铝单板同时保持了常规铝单板高耐候性、抗颜料粉化性等优点，可在室外保持长年性能不变，装饰效果与石材相当。

### Advantage and characteristics

- (1) Imitation stone pattern aluminum sheet with stone decorative style.
- (2) Compared with the conventional monochrome spray aluminum sheet, imitation stone pattern aluminum sheet has more natural decorative effect selection, and further enriched the aluminum sheet style, rich designer imagination, choice of space, improve decoration grade;
- (3) Compared with the natural stone, stone-like pattern spraying aluminum sheet construction is more lightweight and easy on the wall, environmental protection, low cost, according to different architectural appearance requirements processed into a variety of shapes, but also large area molding, large area of stone due to the reasons for the processing price is very expensive;
- (4) aluminum stone sheet pattern while maintaining the conventional aluminum sheet high weather resistance, anti-pigment powder, etc., can be maintained in the outdoor performance for many years the same, decorative effect as same as stone .

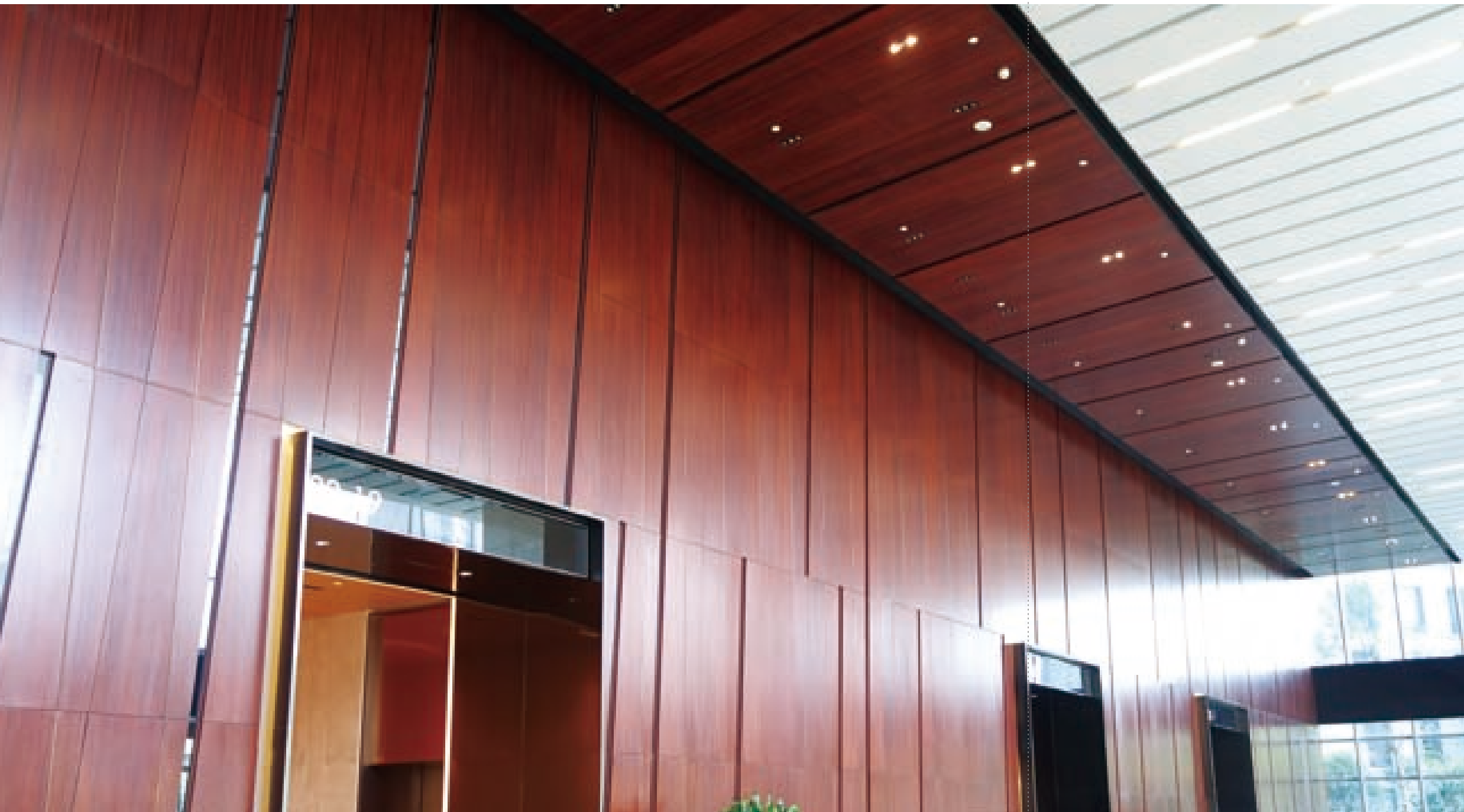


梅山江商务楼 Meishanjiang business building

## 热转印纹理铝单板

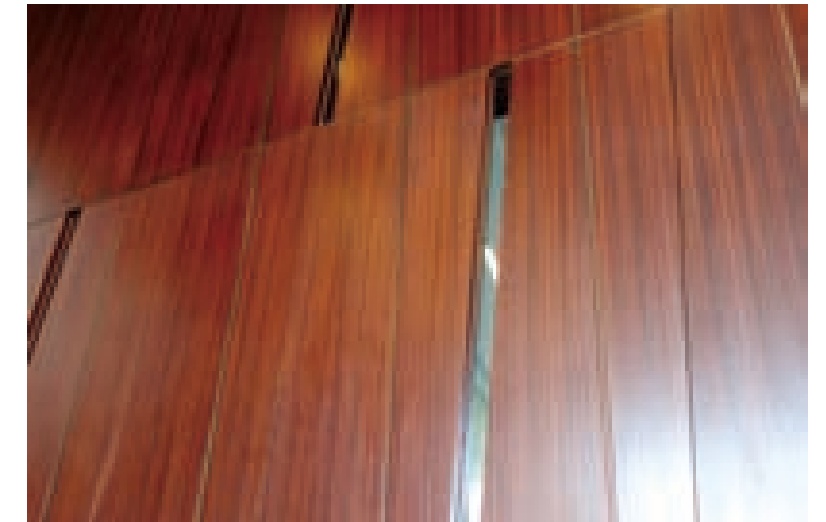
热转印是将花纹图案等印刷到耐热的胶纸上面,再运用热升华原理,通过进行加压、加热等技术措施,将油膜层的花纹图案印到经过特殊处理的介质上的一种新型的技术,公司通过创新工艺将这项技术应用

于铝单板,热转印纹理铝单板以其逼真持久的图案表现,带来广阔的市场前景。



## Thermal transfer textured aluminum sheet

Heat transfer is to print patterns such as heat-resistant adhesive tape on the top, and then use the principle of sublimation, through the pressurization, heating and other technical measures, the oil film pattern printed on a special treatment of the media on a New technology, the company through innovative technology to apply this technology to aluminum sheet, thermal transfer texture aluminum sheet with its lifelike pattern of lasting performance, bring broad market prospects.



### 优势特点

- 基板采用耐腐蚀、强度高的合金铝板或镀锌钢板。
- 涂层具有优异的化学活性和物理特性,以匹配油墨的转印效果。
- 涂层具有优异的深加工性能,满足壳体的深冲等加工要求。

### Advantage and characteristics

- (1) the substrate with corrosion-resistant, high strength aluminum alloy plate or galvanized steel;
- (2) the coating has excellent chemical activity and physical properties to match the ink transfer effect;
- (3) the coating has excellent deep processing performance, to meet the deep-processing shell and other processing requirements.

图案逼真 灵活定制  
Pattern realistic flexible customization



## 双曲面铝单板

赋予铝单板更强的可塑性,使其能像铜版纸一样任意角度扭转,可按照客户要求制定详细方案,定制任意尺寸双曲面、球形面,制造出独特美观的立体造型。

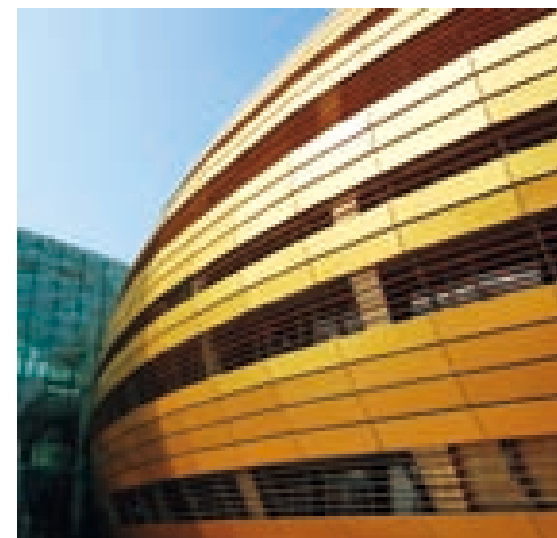


## Hyperboloid Aluminum Sheet

大胆创新 自主创新  
Bold and Independent innovation



It can give the aluminum sheet more plasticity like the coated paper as any angle to reverse, in accordance with customer requirements to develop detailed programs, custom-made arbitrary size hyperboloid, spherical surface to create a unique aesthetic three-dimensional modeling.



### 优势特点

- 弧形优美, 设计独特。
- 重量轻、刚性好、强度高。
- 能长期保持不褪色、不粉化, 使用寿命长。
- 安装维护简便灵活, 降低安装和维护成本。

### Advantage and characteristics

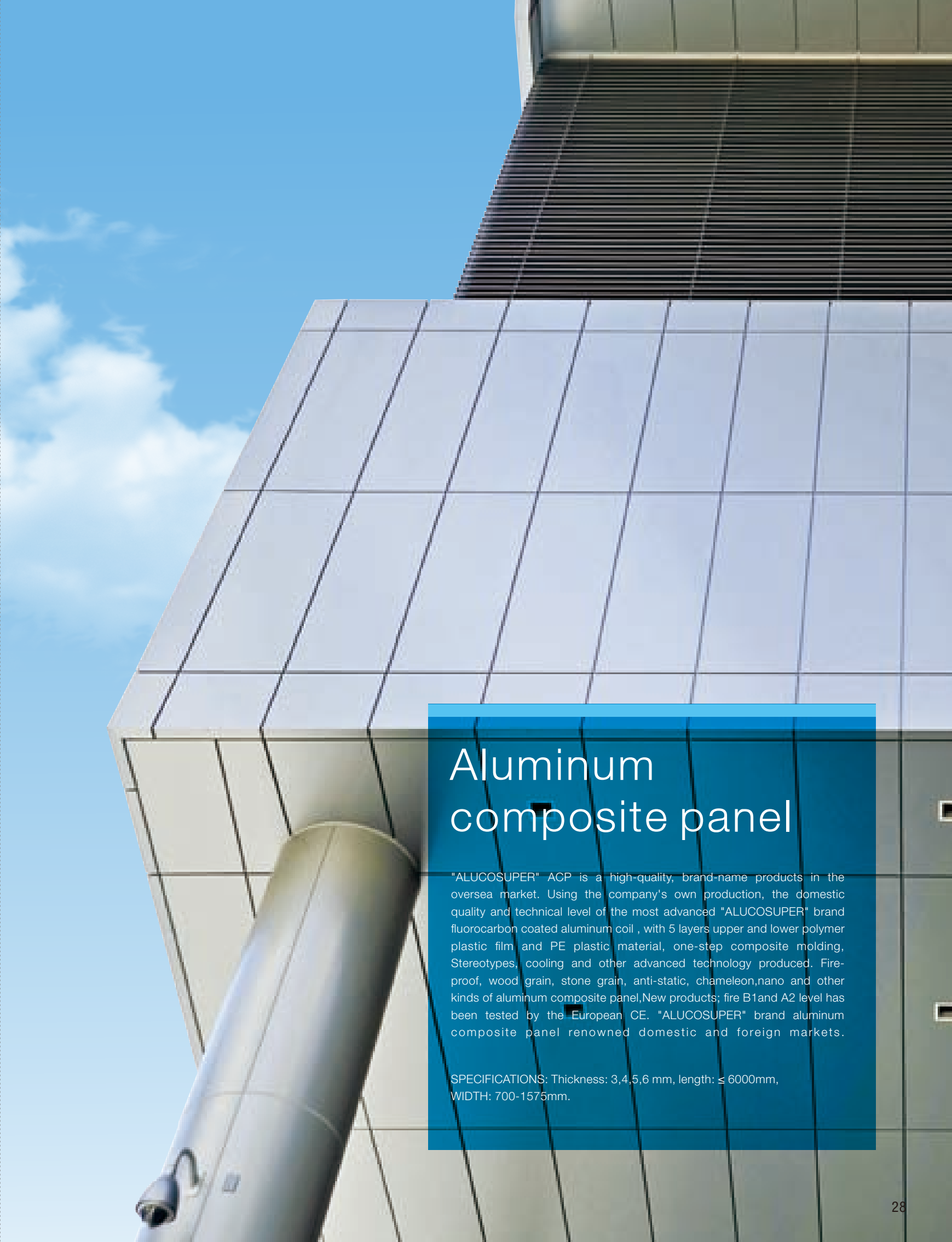
- (1) Beautiful arc, complex process.
- (2) Light weight, good rigidity, high strength.
- (3) Keep not fade for long time, not powder, long service life.
- (4) Installation and maintenance easy and flexible, reduce costs.

## 2- 铝塑复合板系列

“墙煌”牌铝塑复合板在国内外市场上是一种高品质、重信誉的名牌产品。采用自己生产的、国内质量技术水平最先进的“墙煌”牌氟碳涂层铝板面板和背板，上下高分子胶粘膜和PE塑料蕊材，经过一步法复合成型、定型、冷却等先进工艺制作而成。其中防火，木纹，石纹，抗静电，变色龙等各类铝塑板是新研发的特色产品。

- 普通铝塑复合板
- 铜(钢)塑复合板
- 防火铝塑复合板
- 木、石纹铝塑复合板
- 变色龙铝塑复合板
- 纳米铝塑复合板

产品规格: 3、4、5、6mm, 长度: ≤6000mm, 宽度: 700-1570mm



## Aluminum composite panel

"ALUCOSUPER" ACP is a high-quality, brand-name products in the oversea market. Using the company's own production, the domestic quality and technical level of the most advanced "ALUCOSUPER" brand fluorocarbon coated aluminum coil , with 5 layers upper and lower polymer plastic film and PE plastic material, one-step composite molding, Stereotypes, cooling and other advanced technology produced. Fire-proof, wood grain, stone grain, anti-static, chameleon,nano and other kinds of aluminum composite panel,New products; fire B1and A2 level has been tested by the European CE. "ALUCOSUPER" brand aluminum composite panel renowned domestic and foreign markets.

SPECIFICATIONS: Thickness: 3,4,5,6 mm, length: ≤ 6000mm, WIDTH: 700-1575mm.

普通铝塑复合板

优势特点

- 耐候性佳、强度高、易保养。
- 施工便捷、工期短。
- 优良的加工性、断热性、隔音性和绝佳的防火性能。
- 可塑性好、耐撞击、可减轻建筑物负荷，防震性佳。
- 平整性好，轻而坚。
- 可供选择颜色多。
- 加工机具简单、可现场加工。
- 花型和图案可以定制制作。



Normal aluminum composite panel

环保节时 超高性价  
Environmental protection  
section with the high value

Advantage and Characteristics

1. Good weather resistance, high strength, easy maintenance.
2. Convenient construction , short construction period.
3. Excellent processing, heat, noise and fire performance.
4. Good plasticity, impact resistance, reduce weight of building , good shock resistance.
5. Smoothness, light and firm.
6. More colors are available.
7. Processing equipment is simple, can process on site.
8. Designs and patterns can be customized production

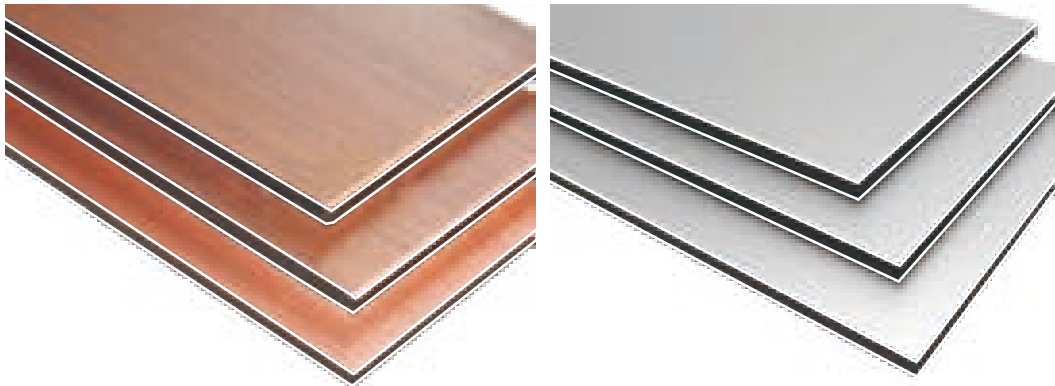
检查项目 TEST ITEM		标准要求 REQUIREMENTS OF STANDARD		结果 RESULT	
铝材厚度 Aluminum thicnesss		平均值 Average≥标称值 最小值min. ≥标称值-0.02mm	面铝 Front	平均值 Average0.28mm 最小值min.0.28mm	
			背铝 Back	平均值 Average0.28mm 最小值min.0.28mm	
涂层厚度 Thickness		平均值 Average≥16μm 最小值min. ≥14μm	平均值 Average25μm 最小值min. 25μm		
涂层光泽度偏差 Gloss value		≤10	偏差 Tolerance1.7		
表面铅笔硬度 Surface pencil hardness		≥HB	2H		
涂层柔性 Flexibility		≤3T	2T		
涂层附着力 Coating adhesion		划格法0级class0 划圈法1级class1	划格法0级 Class0 划圈法1级 Class1		
耐冲击性 Boiling water resistance		≥20kg.cm 不脱漆,无裂痕 No depainting,no crack	≥20kg.cm 不脱漆,无裂痕 No depainting,no crack		
耐水性 Boiling water resistance		无异常 No abnormity	无异常 No abnormity		
涂层耐沾污性 Pollute resistance		≤5%	3.1%		
涂层耐酸性 Hydrochloric acid resistance		无变化 No change	无变化 No change		
涂层耐碱性 Allali resistance		无变化 No change	无变化 No change		
涂层耐油性 Oil resistance		无变化 No change	无变化 No change		
涂层耐溶剂性 Solvent resistance		无漏底 No base exposed	无漏底 No base exposed		
弯曲强度 Bending stregh		≥标称值 Nominal value	正面纵向 Front longitudinal	106MPa	
			正面横向 Front lateral	98MPa	
			背面纵向 Back longitudinal	110MPa	
			背面横向 Front lateral	104MPa	
剥离强度 Peel strength		平均值 Average≥4.0N/mm 最小值min.≥3.0N/mm	正面纵向 Front longitudinal	平均值 Average 6.9N·mm/mm 最小值 min. 6.6Nmm/mm	
			正面横向 Front lateral	平均值 Average 6.9N·mm/mm 最小值 min. 6.7Nmm/mm	
			背面纵向 Back longitudinal	平均值 Average 6.5N·mm/mm 最小值 min. 6.3Nmm/mm	
			背面横向 Front lateral	平均值 Average 7.1Nmm/mm 最小值 min. 6.8Nmm/mm	
热变形温度 Heat distortion temperature		≥85℃	102℃		
耐温差性 Temperature Cycle Resistance	剥离强度下降率 Decrease rate of peel strength	≤10%	6%		
	涂层附着力 Coating adhesion	划格法0级 Class0 划圈法1级 Class1	划格法0级 Class0 划圈法1级 Class1		
	外观 Appearance	无变化 No change	无变化 No change		
720h耐盐雾性 (4000h) Salt spray resisance		≤1级 ≤grader 1	1级 Grade 1		
600h耐人工气候老化 Artificial weathering	色差 Colour retention	≤2.0	1.46		
	失光等级 Degradation of gloss	≤2级 ≤grade2	0级 Grade 0		
	其他老化性能 Others	0级 No lower than grader 0	0级 Grade 0		



铜(钢)塑复合板

分别简称铜塑板和钢塑板,是指以塑料为芯层,正面为铜板和钢板,背面为铝板或铜板和钢板的三层复合板材。钢塑复合板表面覆以装饰性和保护性的装饰涂层或薄膜以提高产品的装饰性和防腐性;而铜塑复合板则只需覆一层加工保护性薄膜。

铜塑复合板主要有铜绿色、古铜色等特殊颜色。



Copper (steel) composite panel

华贵强韧 超长耐候  
Luxury tough and long weather resistance

铜基板常用材质:紫铜板和黄铜板  
Real materials: copper and brass sheet

元素 Element %	铜 Cu	锌 Zn	铅 Pb	镍 Ni	铁 Fe	磷 P	锑 Sb	铋 Bi	氧 O	杂质 Impurities
紫铜 Copper	57~60	余量 Margin	≤0.5	—	≤0.3	≤0.01	≤0.01	≤0.003	-	≤0.1
黄铜 Brass	≥99.9	≤0.005	≤0.005	≤0.005	≤0.005	≤0.002	≤0.002	≤0.001	≤0.06	≤0.1

铜板的力学性能  
Mechanical Properties of Copper Sheet

项目 Project	抗拉强度 (MPa)	延伸率 (%)
紫铜 Copper	≥195	≥30
黄铜 Brass	≥294	≥25

钢基板材质  
Steel real material

牌号	C	SI	Mn	P	S
SPCC	≤0.12	≤0.05	≤0.50	≤0.035	≤0.035
SPCE	≤0.08	≤0.03	≤0.40	≤0.025	≤0.030

钢基板力学性能  
Steel mechanical properties

牌号	屈服强度 RD (N/mm²)	抗拉强度 RM (N/mm²)	伸长率 (%)
SPCC	—	270--500	20--22
SPCD	140--300	270--420	24--26
SPCE	140--260	270--380	28--30

铜(钢)塑板检测项目  
Copper (Steel) composite panel test item

测试项目 Color measurement project	单位 Unit	性能指标 Performance
弯曲强度 Flexural strength	Mpa	≥60
弯曲弹性模量 Flexural modulus	10 <sup>4</sup> MPa	≥2.0
贯穿阻力 Penetrating resistance	KN	≥7.0
剪切强度 Shear strength	Mpa	≥22.0
剥离强度180° Pell-off strength	N/mm	≥7.0
热膨胀系数 Thermal expansion	/°C	≤4.00×10 <sup>-5</sup>
热变形温度 Heat distortion temperature	°C	≥95
耐沸水性 Boiling water resistance	无变化 No Effec	
阻燃性 Fire resistance	应符合GB 8624 规定B级 GB 8624 Class B	

Copper composite panel and steel composite panel, refers to the core of plastic, positive for the copper and steel, the back of the aluminum or copper and steel plate of three composite sheet.steel composite panel with decorative and protective decorative coating or film to improve product decoration and corrosion resistance; but copper composite panels are only covered with a layer protective film processing.Copper composite panels have copper green, bronze and other special colors.



优势特点

- 基本身耐冲击性强、韧性高, 弯曲不损面漆, 抗冲击力强。
- 超强剥离度。
- 涂层超耐候性。
- 铜塑复合板表面独具铜的特色, 气质华贵, 可直接用铜的本色来装饰、装修, 铜塑板具有很强的杀菌性和优秀的耐蚀性, 且表面平整易于加工成型。

Advantage and characteristics

- Super peeling.
- Coating super-weather ability.
- Copper composite panel have a unique surface of copper feature , temperament luxury, can be directly used to install the true nature of copper
- Decorated, copper composite panel has a strong bactericidal and excellent corrosion resistance, and the surface smooth and easy in processing molding.

防火铝塑板

墙煌A2级、B1级防火铝塑板是一种新型的高档墙体装饰及防火安全材料。它是由“墙煌”牌彩色涂层铝板与无卤阻燃改性聚乙烯PE芯材与高分子粘接膜(热熔胶)经高温复合而成的一种新型金属塑料复合材料。墙煌A2级、B1级防火铝塑板分外墙、内墙两种产品。

A2级防火铝塑板

墙煌A2级防火铝塑板,其持续燃烧时间不超过15s,且平均烟气温度峰值≤125℃,烟密度等级(SDR) ≤15,其他各项指标均达到GB8624-1997不燃类A级标准。

B1级防火铝塑板

通过国家防火建筑材料质量检验中心测试,防火性能按GB8624-2012《建筑材料及制品燃烧性能分级》的方法测定,燃烧性能等级符合B1 (B) 级的规定要求。

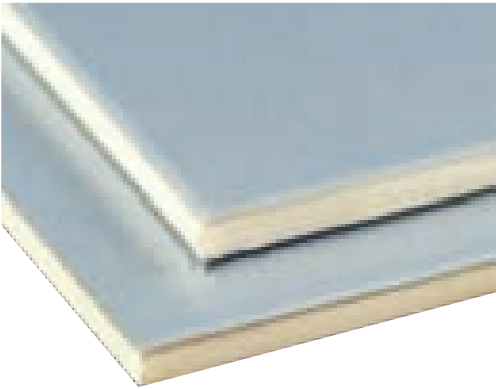
FR A2, B1 proof fire aluminum composite panel is a new type of high-grade wall decoration and fire safety materials. It is a new type of metal-plastic composite made of "ALUCOSUPER" color coated aluminum coil and halogen-free flame-retardant modified polyethylene PE core material and polymer adhesive film (hot melt adhesive) by high temperature composite. ALUCOSUPER A2 level, B1 fire-proof aluminum-composite panels exterior, interior two products.

A2-class FR aluminum composite panel

The average burning temperature is ≤125℃, the smoke density grade (SDR)≤15, the other indexes are meet to GB8624-1997 A class standard of noncombustible grade, and the average flue gas temperature is not more than 15s .

B1-class FR aluminum composite panel

The fire performance is tested according to the GB8624-2012 "Classification of Combustion Properties of Building Materials and Products", and the combustion performance level meets the requirements of B1 (B) level through the test of the National Fireproof Building Materials Quality Inspection Center.



Fireproof aluminum composite panel

防火性强 美观大方  
Strong fire resistance and beautiful appearance

检验项目 Test items	检验方法 Test method	标准要求 Standard requirement		检查结果 Test result	结论 Conclusion
燃烧增长速率指数 (FIGRA),W/s	GB/T 20284-2006	B	≤120	30	B1 级合格 Qualified
600s内总热释放量 (THR <sub>600s</sub> ),MJ	GB/T 20284-2006		≤7.5	3.4	
火焰横向蔓延长度 (LFS),m	GB/T 20284-2006		<试样边缘 The sample edge	符合要求 Meet the requirements	
焰尖高度 (F <sub>s</sub> ),mm	GB/T 8626-2007		≤150	20	
过滤纸是否被引燃 The filter paper is ignited or not	GB/T 8626-2007		过滤纸未被引燃 The filter paper is not ignited	符合要求 Meet the requirements	
烟气生成速率指数 (SMOGRA)	GB/T 20284-2006	S1	≤30	4	合格 Qualified
600s内总产烟量 (TPS <sub>600s</sub> ), m <sup>2</sup>	GB/T 20284-2006		≤50	34	
燃烧滴落物/微粒 Burning drip / particles	GB/T 20284-2006	D0	600s内无燃烧滴落物/微粒 No Burning Drops / Particles in 600s	符合要求 Meet the requirements	合格 Qualified
产烟毒性,级 Production of toxic, grade	GB/T 20285-2006		达到ZA <sup>1</sup>	ZA <sup>1</sup>	合格 Qualified

Classification of Fire	Class-A2,S1,d0-Passed	EN13501-1:2007+A1:2009 clause 8 NFPA285/BS6853 UBC-17-5
Surface Burning Characteristics (both with skin & without skin)	Class A	ASTM E84
Resisittance to Spread of Flame	Class-b Min	Appendix-11 UIC-564-2
Deteriorationg of Visibility of Smoke	Class-A Min	Appendix-11 UIC-564-2
Limiting Oxygen Index	≥32	IS:13501
Toxicity	Less than 1	NCD-1409
Heat Release Rate	R1 (HL3) 50KW/M <sup>2</sup>	ISO 5660-1
Composition of Core	Inorganic Compound: ≥90% Organic Compound: ≤10%	Fourier Transform Infrared Spectroscopy(FTTIR)

A2级、B1级防火铝塑板与普通铝塑板燃烧对比试验

A2, B1 FR aluminum composite panels and ordinary aluminum composite panel combustion comparison test



A2级防火铝塑复合板  
A2 FR aluminum composite panels

B1级防火铝塑复合板  
B1 FR aluminum composite panels

普通铝塑复合板  
Ordinary aluminum composite panel

Intertek 防火燃烧检测  
Intertek proof fire test



测试前1 Test before 1

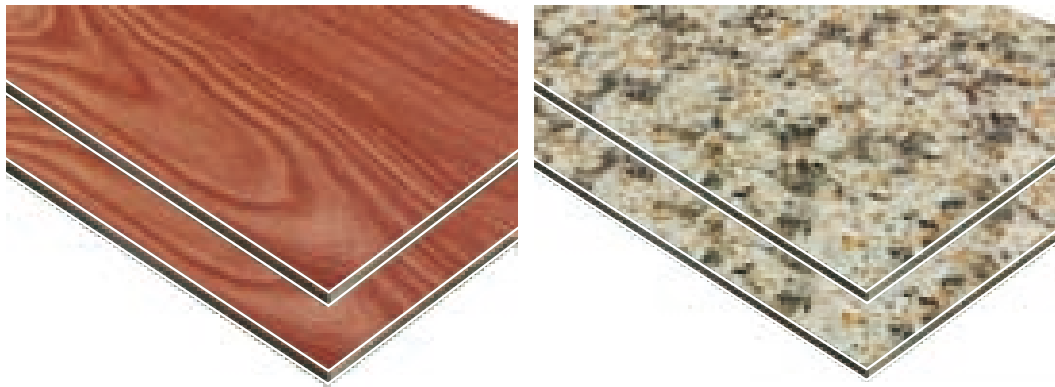
测试前2 Test before 2

测试前1 Test before 1

测试前2 Test before 2

## 木、石纹铝塑板

木、石纹彩涂铝板，融合了铝板的所有优点于一身，既实现了木、石纹的逼真效果，又具有重量轻、施工方便、表面光洁的优点。木、石纹彩涂铝板摒弃了过去使用的PET贴膜，易脱落的缺点，直接使用氟碳聚、酯涂料涂层，从而打破过去只能用于室内装修的瓶颈，延长木、石纹彩涂铝板使用寿命。



## Wood, stone pattern aluminum composite panel

高仿多变 耐候环保  
High imitation changing weather  
resistance environmental protection

High imitation changing weather resistance environmental protection  
Wood, stone pattern coated aluminum, the integration of the advantages of the new aluminum , both to achieve the wood, stone pattern of realistic effects, but also has a light weight, construction convenience, the advantages of smooth surface. Wood, stone color coated aluminum panel to abandon the past use of PET film.easy to fall off the shortcomings of direct use of fluorocarbon polyester coating.thus breaking the past can only be used for interior decoration bottlenecks to exteng the wood,stone pattern Caitu aluminum Service life.



### 优势特点

- 装饰性：辊涂花纹，色彩图案多变，选择丰富。木、石质感足以乱真，有鲜活的天然美感。能丰富产品的人文内涵，激发装饰者的创作灵感，给人更多美的享受。
- 耐候性：用氟碳、高性能聚酯涂料直接辊涂，花色经高温烘烤而成，是涂料本色而非表面“化妆”色。光泽保持度高，色彩稳定性好，色差变化极小，经久耐用。
- 机械性：选用优质铝材、高档聚酯氟碳涂料，采用先进涂装工艺制成。具备装饰板所需的抗弯、抗折强度，经得起四季温湿度变化，不会弯曲、变形、膨胀。
- 环保性：辊涂对涂料的利用率可达100%，涂层经高温烘烤后无有害物残留或扩散。抗酸碱侵蚀，不会腐坏或产生霉菌，永不释放有害气体，无需进行修复性涂绘，对环境无任何副作用。

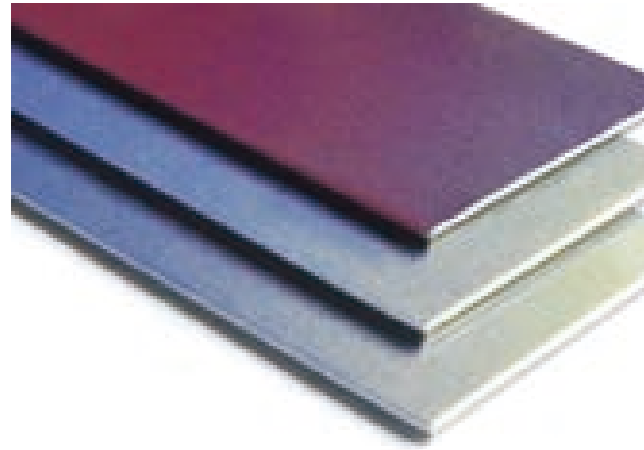
### Advantage and characteristics

- Decorative: roll coating patterns, color patterns changeable, rich choice Wood, stone texture enough to spurious, there is fresh natural beauty.  
Enrich the humanistic connotation of the product, inspire the creative inspiration of decorator, give more beauty to enjoy.
- Weather ability: Fluorocarbon, high-performance polyester coating directly roller coating, color baked by high temperature,and gloss retention, color stability,and color change is durable.
- Mechanical: the choice of high-quality aluminum, high-grade polyester fluorocarbon coating, the use of advanced coating process made. With the required bending board, bending strength, can withstand the four seasons temperature and humidity changes, will not bend, deformation, expansion.
- Environmental protection: roller coating of the utilization rate of up to 100%, the coating after high temperature baking no harmful residues or spread. Anti-acid and alkali erosion, will not spoil or produce mold, never release harmful odor, without repairing painted, no environmental side effects.



## 变色龙铝塑板

是因其表面的色泽幻化多变而得名，其装饰面涂覆一种特殊的高光泽涂料，触感平整光滑，具有金属般绚烂柔美的色泽，充分利用光线和物质之间的反射、折射、衍射幻化出大自然中奇妙的色彩，从而使装饰面色泽可随光源和视角的改变而呈现完全不同的色泽。



Its decorative surface is coated with a special high-gloss coating, touch smooth, with a metallic gorgeous soft color, make full use of light and the reflection between the material, refraction, Diffuse fantasy out of nature in the color, so that the decorative surface color can be changed with the light source and the angle of view showed a completely different color.

### 优势特点

- 光学性: 变色龙系列大胆采用光学元素, 利用光线的折射, 反射, 衍射等机理, 观察者随着视角的转变会体会到不同的感官享受。
- 色卡搭配: 变色龙的色卡是基于自然界的颜色制作的, 在染色效果中增加了一些新的元素, 例如色彩, 颜色的深浅度。
- 设计发挥性: 变色龙铝塑板能够根据顾客要求制造出幻化的色泽和形态, 能满足设计师独具匠心的设计, 实现完美的装饰效果。

### Advantage and characteristics

- Optical: Chameleon series of bold use of optical elements, the use of light refraction, reflection, diffraction and other mechanisms, the observer with the perspective of the transition will experience a different sensory enjoyment.
- Color card with: Chamelon color card is based on the nature of color and production, in the dyeing effect added some new elements, such as color, color depth.
- Design of playability: Chameleon aluminum composite panels can be manufactured according to customer requirements of the color and shape of the illusion, to meet the designer's distinctive design, to achieve the perfect decorative effect.

耐污自洁 换代提升

Self-cleaning  
self-cleaning upgrade

纳米自洁铝塑复合板

运用高科技纳米涂层技术, 使其在耐污性、自洁性、耐酸碱等多项性能上具备明显优于传统氟碳铝塑板的超强特性, 是一种具有更新换代意义的新型建筑材料。

纳米氟碳铝塑板超强特性

项目	纳米氟碳涂层	氟碳涂层
结构细致性	采用纳米材料树脂、颗粒大小约在0.03μ－0.01μ之间，光滑细致。	表面涂层颗粒大小细度在0.1μ以上，表面平滑。
耐污性	表面细致光滑，空气尘埃油污很难附着，易于清洁。	尘埃颗粒度与涂层颗粒度相近，较易附着。
自洁性	表面颗粒微小，表面张力大，灰尘颗粒易被风和水带走。	表面张力较小，尘埃和油污附着着力较大，水珠以滑动方式移动，难予带离灰尘颗粒。
耐洗刷性	擦拭1万余次。	擦拭几千余次。
耐候性	采用国际领先“三涂”技术，拥有更高的耐候性和色泽保护层，纳米涂料在涂层表面形成保护膜，防止涂层的氧化和老化。	质保20年，采用传统一般“二涂”技术，质保15年。

Nano self-cleaning ACP

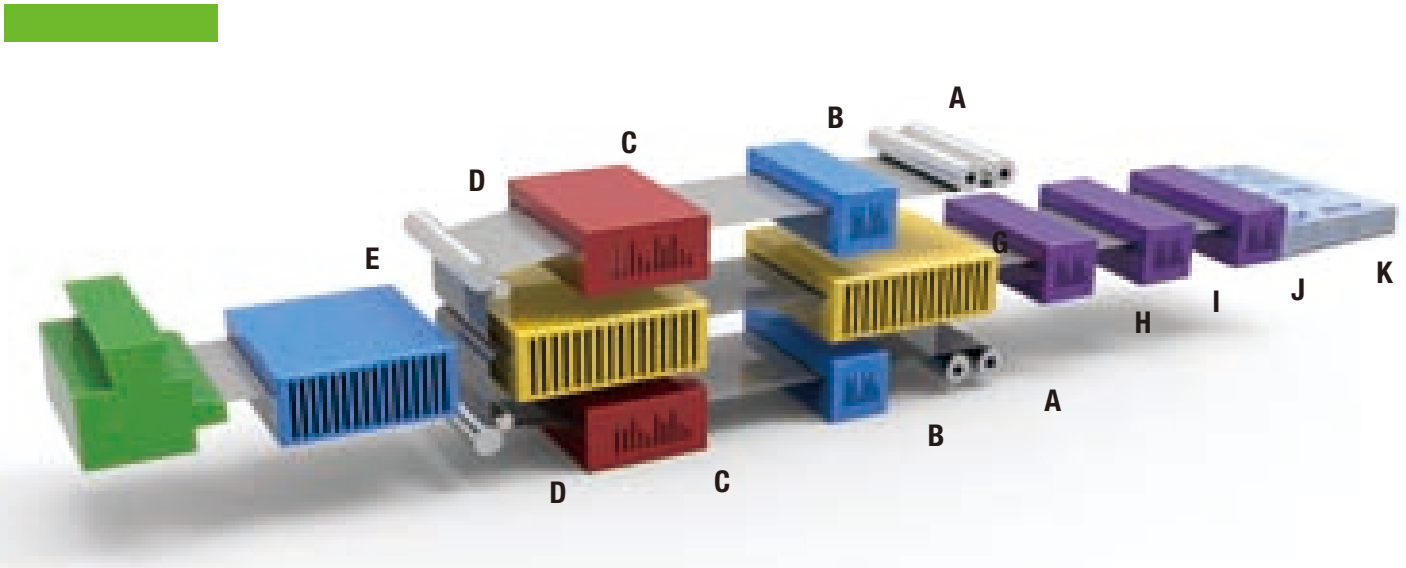
The use of high-tech nano-coating technology, so that in the stain resistance, self-cleaning, acid and many other properties have significantly better than traditional fluorocarbon aluminum plate super features, is a replacement significance New Building Materials.

Nano - fluorocarbon aluminum - composite panel super characteristics

Project	Nano-fluorocarbon coating	Fluorocarbon coating
Structural detail	Using nano-material resin, the particle size of about 0.03μ-0.01μ between, smooth and meticulous.	Surface coating particle size fineness of 0.1μ above, the surface is smooth.
Stain resistance	Surface fine and smooth, air dust is difficult to attach oil, easy to clean. Stain resistance	Dust particle size and particle size similar to the coating, more easily attached.
Self-cleaning	The surface of small particles, surface tension, dust particles easily taken away by wind and water.	Surface tension is small, dust and oil adhesion is greater, the water droplets in a sliding way to move, difficult to take away from the dust particles.
The wash resistance	Clean more than 10,000 times.	Clean more than a thousands times.
Weather resistance	Using the world's leading "three-coating" technology, has a higher weather resistance and color protection layer, nano-coating the formation of protective film coating to prevent oxidation and aging of the coating. Warranty 20 years.	Using the traditional general "two coating" technology, quality assurance for 15 years.

Process

生产过程



- A** 铝片放卷  
Uncoil

**B** 夹送辊  
Pinch roller

**C** 预热箱  
Preheating box
- D** 胶粘膜粘贴  
Adhesive film

**E** 聚乙烯原料塑化挤出  
Extrusion of pollythene

**F** 热压一步成型区域  
Heat-press one -step forming zone
- G** 冷却定型区域  
Cooling setting region

**H** 预裁切  
Pre-cutting

**I** 切边  
Trimming
- J** 定尺裁切  
Exact-length cutting

**K** 成品堆垛  
Stacking of finished products

Machining process

加工流程



Typical cases  
案例集锦

45

交通运输类45座  
45 traffic projects

34

体育场馆34座  
34 stadiums

25

会议展览馆25座  
25 Conference and Exhibition Halls

115

高档住宅/写字楼115座  
115 upscale residence/office buildings

9

国外工程9座  
9 overseas projects

100+

综合类上百余座  
Over 100 comprehensive projects



常州奥体中心  
Changzhou Olympic Center



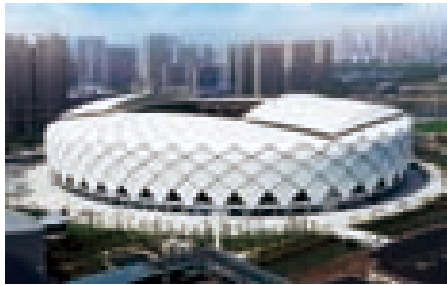
济南奥体中心游泳馆  
Jinan Olympic swimming pool



南太湖湿地奥体公园  
Huzhou South Lake Wetland Olympic Park



广西南宁体育中心  
Guangxi nanning sport center



中国轻纺城体育中心体育场  
China textile city sport center



广州新客站  
GuangZhou New Bus Station



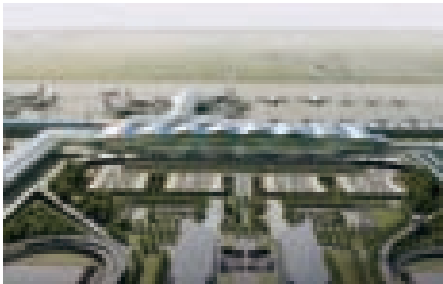
绍兴奥体中心  
Shaoxing Olympic Center



湖南长沙贺龙体育中心  
Hunan Changsha HELONG Gymnasium



杭州东站  
Hangzhou Railway Station



杭州萧山国际机场  
Zhejiang Xiaoshan International Airport



天津东站  
Tianjin Railway Station



温州国际会展中心  
Tianjin Binhai International EXPO Center



无锡火车东站  
Wuxi Train east station



贵阳龙洞堡机场  
Guizhou airport



天津滨海国际机场  
Tianjin binhai international airport





义乌机场  
Zhejiang Yiwu Airport



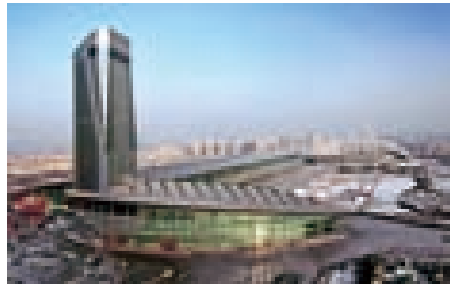
成都西部国际博览城  
Chengdu west International EXPO Center



杭州阿里巴巴软件工业园  
Hangzhou Alibaba Software Industrial Zone



苏州国际博览中心  
Suzhou international center



哈尔滨会展中心  
Haerbin International EXPO Center



泉州行政服务中心  
Quanzhou Administration Center



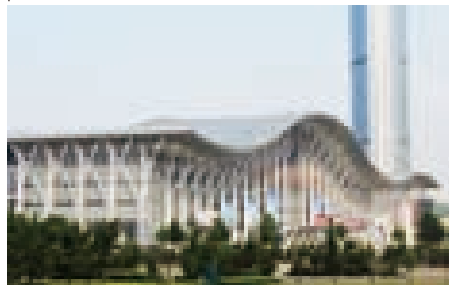
杭州湾跨海大桥观光平台  
Hangzhou Bay Cross-sea Bridge Sightseeing platform



哈尔滨中国木雕馆  
Harbin China Wood carving Museum



杭州福雷德会展中心  
Hangzhou Fred Exhibition Center



山东烟台会展中心  
Shandong Yantai World Trade Exhibition Center



宁波华生家具城  
Ningbo hushing furniture Plaza



杭州运河水陆交通集散中心  
Hangzhou Water and land transportation center



昆明滇池国际会展中心  
Kunming dianchi international expo center



上海市糖業菸酒集團  
Shanghai Tangyeyanjiu grou



中国轻纺城胚布市场  
China textile city Embryo cloth Market



精工钢构科研楼  
Jingcong integrated research building



南京地铁奥体中心站  
Nanjin subway center station



天津地铁  
Tianjin metro



温岭行政中心  
Wenling Administration Center



厦门新景中心  
Xiamen xinjin center



萧山知嫁苑  
Xiaoshan ZHIJIA Garden



杭州万达广场  
Hangzhou wanda plaza



曹娥江大坝工程  
Gates Works of Cao E River



哈尔滨金鼎文化广场  
Harbin Jinding culture plaza



上虞国际大酒店  
Shangyu International Hotel



宁波和丰创意广场  
Ningbo hefeng plaza



河南人民医院高级病房楼  
Henan people's Hospital



苏州中茵皇冠国际社区  
Suzhou zhongyin crown international Community



绍兴柯桥轻纺城联合市场  
China textile city union market



徐州图书馆  
Xuzhou Library



天津医院  
Tianjin Hospita



千岛湖文化综合体  
Qiandao Lake Lake Cultural Complex



温州万达广场  
Wenzhou wanda plaza



南京新街口苏宁电器广场  
Suning Nanjing Xin Jie Kou Square



苏州招商小石城  
Suzhou Merchants Rock city



顺发恒园  
Shunfa constant Park



东阳总部大楼  
Dongyang Headquarters Center



华鼎君临天峯  
Huading



上海中山广场  
Shanghai zhongshan plaza



金色黎明  
Golden dawn



曙光之城  
Dawn of the city



万国中心  
IWC Center



杭州万象城  
Hangzhou Vientiane City



上海新港城  
Shanghai xingang city



泰国世贸中心  
Thailand World Trade Center



乌拉圭卡拉斯科国际机场  
Carrasco International airport in uruguay



迪拜地铁站  
Dubai Metro Station



智利 MOSHE MALL



巴西 Edifício Savassi Mall



罗马尼亚维纳斯酒店 HotelVenus-Mamaia4



无锡润华国际大厦  
Wuxi runhua international building



武汉浙商国际大厦  
Wuhan Zheshang International Building



北京富顿中心  
Beijing fudun center



浙江医学院附属儿童医院  
Children's Hospital of Zhejiang Medical College



安徽皖西宾馆  
Anhui wanxi hotel



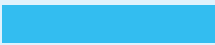
上海中银大厦  
Bank of China Tower shanghai



成都骄子大厦  
Sichuan Chengdu pride mansion



东方一品  
EAST TOP-LEVEL Residential Buildings



完善的营销服务网络

公司立足国内的同时，以国际标准合理调整市场布局，以点带面辐射全国及国际业务。

以浙江绍兴和安徽六安两大生产基地为核心，在全国各地设立营销网点，工程案例遍布全国，海外市场已拓展至欧洲，北美、南美，中东，非洲，东南亚等国家和地区。

A Complete Marketing Service Network

Based on domestic market, the Company also adjusts market layout in international standards

Expand national and international business from point to surface

Regard two major production bases in Zhejiang Shaoxing and Anhui Lu'an as the core

Set up marketing network all over the country

Engineering cases has covered throughout the country, and overseas market has expanded to Europe, North America, South America, Middle East, Africa, Southeast Asia and other countries and regions.



全国办事处

北京办事处、上海办事处、广东办事处、浙江办事处、安徽办事处、江西办事处、山东办事处、重庆办事处、西安办事处、常州办事处、郑州办事处、厦门办事处、武汉办事处

Local Offices

Beijing office, Shanghai office, Guangdong office, Zhejiang office, Anhui office, Jiangxi office, Shandong office, Chongqing office, Xi'an office, Changzhou office, Zhengzhou office, Xiamen office, Wuhan office